

flexiHaul flexiTester

Multi-Function Field Tester for DWDM Wavelengths and Services

A Powerful Tool to Enhance Operations

In order for field engineers to check connectivity when configuring semi-active or passive DWDM networks, many tools such as radio vendor applications, OTDRs, optical power meters, and VFLs are required. For RAN use cases, most radio equipment is installed in a high place, so it is extremely dangerous, time consuming and costly to work with so many tools. HFR Networks' flexiTester helps eliminate these challenges to enhance field operations while driving improved productivity. This tool delivers high performance at a low cost and incorporates our experience from deploying large-scale RAN networks globally for many years.

The flexiTester supports multiple critical functions, including; optical power meter, OTDR, Smart Tunable SFP+/SFP28 testing, and Visual Fault Finder functions. All functions are also available through the smartphone application.

A Testing Tool That Fits in the Palm of Your Hand



Easily and Quickly Check Connectivity Without the Radio Unit

Consolidating several pieces of test equipment to a single hand held device, increases safety (especially at elevated heights), simplifies the overall testing process, and significantly reduces the time needed to complete testing.

HFR Networks' flexiTester

OTDR

- Optional OTDR SFP Required
- OTDR Measuring
- OTDR Graph
- SOR, JPEG Export

Optical Power Meter

- Measuring Rx Power
- 850, 1200-1700nm

Smartphone Application

- Connection to Android Smartphone and Apple iOS Devices
- GUI with Detailed OTDR View
- Bluetooth and USB-C



SFP+/SFP28 Module Tester (Including Self Tunable Optics)

- DDM Information (Tx PWR, RX PWR, etc)
- Manual Wavelength Tuning

Visual Fault Finder

- Red Light LD Source
- Finds Fiber Faults
- Finds Endpoints



Key Benefits:

- Early validation of the service path prior to equipment installation.
- Assist in optical path validation, including FDP quality control
- Streamline installation and troubleshooting by providing various tool functions in one solution.
- Designed for the field: flexible, cost-effective and hardened for use.
- Supports flexiHaul Smart Tunable Optics (SFP+/SFP28)
- Easy deployments across semi-active or passive DWDM use cases.
- Open and standards compliant for use across vendors
- High performance, with simplified operations to work in the field when installing or troubleshooting.

Connectivity Check

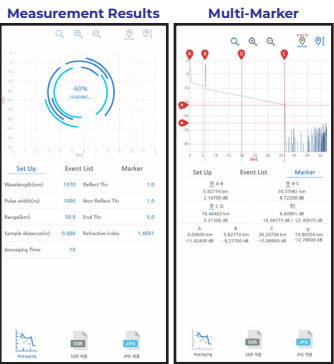
- Simultaneously measure Tx and Rx power of a general SFP or Smart Tunable Optic to validate connectivity.
- Supported wavelength bands: 850 nm, 1200 nm ~ 1700 nm.

Smart Tunable Optics Tester (SFP+/SFP28)

- Tester checks automatic wavelength setting functions of the flexiHaul Smart Tunable Optics SFP+/SFP28.
- Can manually set the wavelength on the flexiHaul Smart Tunable Optics.
- Controlled and checked through the flexiTester and/or Smartphone application.



Smartphone Application



OTDR Measurements

- OTDR functions require the flexiTester to be used with HFR Networks' OTDR SFP+.
- Check connectivity and quality of fibers, plus the approximate cut distance in case of a problem.
- Measurement wavelength: 1550 nm
- Measurement range: 40 km with 100m dead zone
- Targeting support for 1m resolution without dead zone within 2 km span by supporting near-field OTDR mode in the future.
- Measurements can be saved as complete SOR or JPG files.



Optical Power Meter

Optical Power Meter

- Supports Optical Power Meter functions
- Supported wavelength bands: 850 nm, 1200 nm ~ 1700 nm.
- Supports both Ø1.25 for LC and Ø2.5 for SC without an adapter

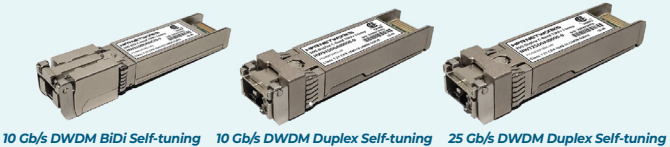
Visual Fault Finder

- VFL functions using high brightness red laser.
- Search for fiber faults and check fiber endpoints.

flexiHaul Smart Tunable Optics

HFR Networks has innovated by adding Smart Tunable Optics into their flexiHaul solutions. Smart Tunable Optics are intelligent, plug-and-play, wavelength self-tuning transceivers that eliminate the need for time-consuming tasks, such as wavelength planning, manual fiber tracking, and wavelength programming. Each Smart Tunable transceiver on a DWDM optical link can automatically self-tune to the correct wavelength within 5 minutes determined only by its physical connection to the passive mux/demux infrastructure without intervention by the host system or a field technician.

flexihaul Smart Tunable Optics: Intelligent, Plug-and Play, Wavelength Self-Tuning Transceivers



Specifications

Display	128 x 64 Pixels OLED
Display Size	2.5 Inches 63.5 mm
Dimensions	6.1(H) x 3.5(W) x 1.3(D) Inches 156(H) x 88(W) x 33(D) mm
Battery	Lithium-Ion 5000mAh Fully Charged: 5 Hr @5V, 2A
Continuous Operations	34 Hours @OPM Mode
Operating Temperature	-10 ~ 60 °C, 14 ~ 140 °F
Storage Temperature	-20 ~ 60 °C, -4 ~ 140 °F
Communication Interface	Bluetooth / USB Type-C • Android Smartphone/Tablet • Apple iOS
Weight	300 Grams 10.6 Ounces
OTDR Measurements	Requires a HFR Networks' OTDR SFP+

Part Numbers

flexiTester	Part #: H8000HTS00000-0
OTDR SFP+	Part #:HOS00C40C0000-0 Required for OTDR Functions